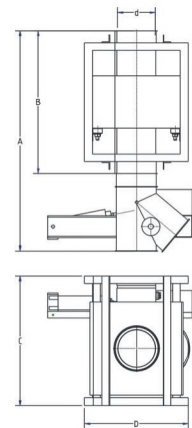


METAL SHARK® GF

For Gravity Feed Pipelines

Typically, GF metal detectors are used in gravity feed pipes and provide highest performance in detecting magnetic and non-magnetic metals. The bulk material falls through the metal detector. With the reject flap EX-S even smallest metal objects are separated out of the product stream promptly.

Maintenance free design and high quality construction, for reliable operation in the most challenging industrial environments.



Specifications

Ø d	Ø d (mm)	A	B	C	D	A (mm)	B (mm)	C (mm)	D (mm)	Typical Material Flow cu ft/hr	Typical Material Flow l/h	Approximate Sensitivity Ø mm		
												FE	AI	SS
4"	100	23.6"	15.8"	17.7"	12.5"	600	400	450	318	700	20000	0.5	0.7	0.8
5"	120	28.4"	19.3"	17.7"	13.3"	720	490	450	338	1000	28000	0.7	0.9	1.0
6"	150	33.5"	21.7"	19.8"	15.8"	850	550	502	400	1500	43000	0.8	1.1	1.3
8"	200	47.2"	31.1"	24.2"	20.0"	1200	790	615	508	2600	74000	1.2	1.6	1.8
10"	250	54.9"	36.8"	31.5"	26.0"	1395	935	800	685	4000	115000	1.5	2.0	2.3
12"	300	63.2"	43.3"	37.0"	31.5"	1605	1100	940	800	5800	165000	1.9	2.4	3.0
14"	350	76.2"	49.8"	40.2"	34.7"	1935	1265	1020	880	7900	225000	2.2	2.7	3.3
16"	400	82.7"	53.2"	42.9"	37.4"	2100	1350	1090	950	10300	290000	2.4	2.9	3.6
20"	500		59.1"	48.8"	43.3"		1500	1240	1100	16200	460000	2.8	3.5	4.2
24"	600		63.0"	54.5"	50.6"		1600	1385	1286	23200	65600	4.6	5.8	6.9

METAL SHARK® GF compact

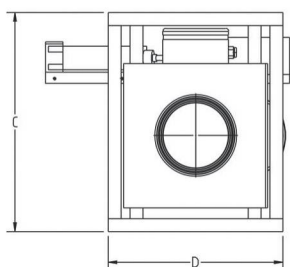
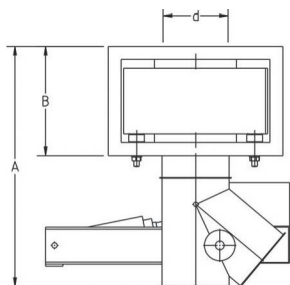
For GF Pipelines in Height Limited Installation Locations.

Typically, GF compact metal detectors are used in gravity feed pipes and provide high performance in detecting magnetic and non-magnetic metals. The bulk material falls through the metal detector. With the reject flap EX-S even smallest metal objects are separated out of the product stream promptly.

The GF compact types have a low assembly height and are especially designed for height limited installation locations. Due to the ultracompact sensor head, the metal detection performance is slightly lower compared to the GF types.

Maintenance free design and high quality construction, for reliable operation in the most challenging industrial environments.

METAL SHARK®
GF compact



Specifications

ø d	ø d (mm)	A	B	C	D	A (mm)	B (mm)	C (mm)	D (mm)	Typical Material Flow cu ft/hr	Typical Material Flow l/h	Approximate Sensitivity ø mm		
												FE	AI	SS
4"	100	17.7"	7.9"	17.7"	12.5"	450	200	450	318	700	20000	0.7	1.0	1.1
5"	120	20.9"	9.8"	17.7"	13.3"	530	250	450	338	1000	28000	1.0	1.2	1.4
6"	150	23.6"	9.8"	19.8"	15.8"	600	250	502	400	1500	43000	1.1	1.5	1.8
8"	200	35.8"	11.8"	24.2"	20.0"	910	300	615	508	2600	74000	1.6	2.2	2.4
10"	250	41.3"	15.4"	31.5"	25.2"	1050	390	800	685	4000	115000	2.0	2.7	3.1
12"	300	43.1"	15.4"	37.0"	31.5"	1095	390	940	800	5800	165000	2.6	3.2	4.1

Metal Detection, Checkweigher and X-Ray



METAL SHARK® GF



WEIGH SHARK® Checkweigher



METAL SHARK® IN MEAT



METAL SHARK® Conveyor



METAL SHARK® IN Liquid



XRAY SHARK® X-Ray



Cassel Messtechnik GmbH (Germany) – Headquarters and main production site

With its production facilities located near Hannover, Germany, Cassel manufactures approximately 1,000 inspection systems annually. Nearly 80 percent of Cassel equipment is exported to the European Union, United States, Southeast Asia, Australia, South Africa and South America. Cassel supplies equipment to several industries, including food production, plastics, pharmaceuticals, textiles, forestry and mining. Cassel machinery can be found in the production lines of many global and respected brands.



Cord Cassel
Managing Director of Cassel Messtechnik GmbH

Customers receive valuable service and support wherever their product inspection systems are located around the world. Over 50 representative offices around the globe provide service performed by factory-trained technicians.

Since 1994, Cassel Messtechnik GmbH (Cassel) has led the production machinery industry in the design and construction of metal detection, checkweigher and x-ray inspection systems for industrial applications. Cassel systems specializes in protecting valuable production machinery against damage caused by undiscovered metal parts. Cassel also succeeds in quality control in the consumer goods industry. Cassel strives to supply quality and high performance at a reasonable price.